

Inverter Chillers & Heat Pumps

EWA(Y)T-CZ series



R-32 technology at its best



Why choose Daikin chiller & heat pump range?



Low environmental impact

The new R-32 Small Inverter Chiller provides the lowest direct and indirect CO2 emissions levels. That makes it an environmentally friendly series, also thanks to the use of R-32, which is known for being a low GWP and sustainable refrigerant.



Top class efficiency

This new series stands out for being able to provide the best efficiency levels in the market, both in cooling and heating mode, allowing substantial savings on energy bills.



Leadership in R-32 technology

Daikin can count on the highest number of R-32 installations around the world. This not only means being the most experienced, but also being the most knowledgeable and reliable brand producing R-32 technology.



Infinite application possibilities

The R-32 Small Inverter Chiller series has been designed to meet the needs of the widest possible range of applications, from process cooling applications, to residential, commercial and data centers applications. All that to provide customers with an extremely flexible solution to their needs.



Optimized system solutions

The management of multiple units in parallel as well as the advanced control logics for optimizing the heating and cooling production and fulfil domestic hot water needs provide to this new series a full set of key features.



Advanced connectivity

Complexity has been reduced by moving from hardware to software tools. Thanks to a newly designed Configuration App, it is possible to let the units of this series communicate with any external BMS.



Compact design

The new R-32 Small Inverter Chiller comes in three different layouts, all providing a very compact footprint despite the cooling/heating capacity they can deliver. The new series represents a great solution for projects dealing with space issues.



Widespread support network

Daikin customers, other than benefiting from the quality standards associated with the brand, they can benefit from Daikin's widespread network of installers and after sales support teams around the world.

Daikin technology at its best

Full Inverter Technology

- › Daikin design DC-Inverter scroll compressors
- › Daikin design DC-Inverter fans
- › Inverter pump kit both Low and High Lift

Low environmental impact

R-32
refrigerant



68% Lower GWP
compared to R-410A

Extended range

Cooling capacity

16 21 32 40 50 64 90
kW

Heating capacity

16 21 32 40 50 64 90
kW



Boost mode
reach around 100 kW!

Wide operating envelope



Hot water production
up to 60°C
for space heating or
domestic hot water

Chilled water production
down to -15°C
for brine application

down to -20°C
ambient temperature both in
cooling and heating mode for
the most critical applications

up to 52°C
ambient temperature
operation suitable for the
most extreme conditions

Achieving best performances



Top Full Load and Part Load
efficiencies for Comfort and Process applications
both in Cooling and Heating modes

- › EER up to 3,22
- › SEER up to 5,76
- › SEPR up to 8,48
- › COP up to 3,46

- › SCOP AW35
up to 4,19 **A++**
- › SCOP AW55
up to 3,02 **A+**

Multiple versions for different applications



- › Cooling Only or Heat pump versions
- › Naked, with low lift or high lift inverter pump kit as an option

Quiet operation



Down to

76 dB(A)

sound power, with the possibility of
further reduction with quiet mode
operation enabled

Enhanced Connectivity



- › User friendly control interface
- › Control by App (Next Step)
- › Daikin On Site
- › Modbus and Bacnet Communication*
- › Applications: radiators, fan coils, radiant floor, domestic hot water*

*with an additional accessory

Fast delivery to site



Large stock availability
allowing immediate
satisfaction of customer's
needs

EWA(Y)T-CZ

scroll inverter chillers



Suitable for comfort
& process applications



Working conditions

Heating guaranteed all year round and hot water production up to 60°C and cooling from -20°C up to 52°C in order to respond to all the different climatic areas installation needs.



Capacity range and layout



16-25 kW



32-50 kW



64-90 kW



Full inverter technology

SEER up to 5,76 | SCOP up to 4,19 | SEPR up to 8,48

The most advanced technology with **highest efficiency and quality standards**.

Unrivalled and proven reliability thanks to testing of chillers and components in different locations even at extreme working conditions.

Daikin's **Scroll compressors** can benefit from Inverter technology that **increases series' efficiency performance**, both at full load and part load, which is very advantageous, as chillers and heat pumps usually operate at part load conditions for most of their operating time.

Great energy efficiency levels are also granted by the **Inverter Driven Fans**, which, along with the Inverter Scroll Compressors, make this new R-32 Small Inverter Chiller a **full Inverter series**.

The **operating range** of the unit can be extended up to the standard operating limit of the unit thanks to the **HIGH AMBIENT TEMPERATURE KIT** and a specific electrical design for high ambient temperatures (up to 52°C).



Plant management & connectivity

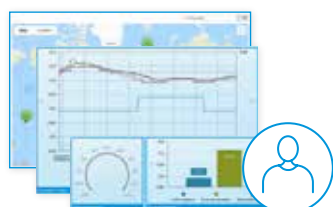
Master/Slave or Modbus RTU are standard to ensure a perfect plant Connectivity.

Remote monitoring and system optimization with Daikin proprietary cloud platform Daikin On Site.

- › **Predictive maintenance** to prevent breakdowns
- › **Visualize energy consumption** to reduce energy costs
- › Monitor and control your building no matter where you are via the **Daikin On Site**
- › **Remote diagnostic support** to increase your system lifetime
- › Manage **Multiple sites**



Dashboards



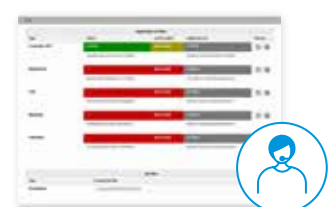
OPERATOR

Diagnostics



SERVICE

Remote software upgrade



DAIKIN

EWAT-CZ

- › Inverter controlled scroll compressor with refrigerant R-32
- › High efficiency with leader-of-class SEER.
- › Application range cooling air side -20°C to +52°C
- › Application range cooling water side -15°C to +25°C
- › Available with Inverter pump kit both low and high lift
- › Optional advanced connectivity kit including: connectivity to any BMS, Daikin on Site and the Daikin App for fast commissioning



Unit size			EWAT-CZN/CZP/CZH	016	021	025	032	40- MONO	40- DUAL	050	064	090	
EWAT-CZN (without pump) ⁽¹⁾			€	9.779,-	11.279,-	12.804,-	14.893,-	17.843,-	19.602,-	21.649,-	24.964,-	33.654,-	
EWAT-CZP (with low lift pump) ⁽²⁾			€	10.960,-	12.828,-	14.303,-	16.807,-	19.755,-	21.471,-	23.734,-	27.367,-	36.035,-	
EWAT-CZH (with high lift pump) ⁽³⁾			€	11.300,-	13.218,-	14.693,-	17.378,-	20.444,-	22.161,-	24.519,-	27.957,-	39.159,-	
Cooling capacity	Nom.	kW		15,9 (1)/16,1 (2)/16,2 (3)	20,9 (1)/21,1 (2)/21,2 (3)	25,6 (1)/25,9 (2)/25,9 (3)	32,4 (1)/32,7 (2)/32,8 (3)	39,6 (1)/39,9 (2)/40,1 (3)	41,4 (1)/41,7 (2)/41,8 (3)	50,8 (1)/51,1 (2)/51,3 (3)	64 (1)/64,4 (2)/64,5 (3)	88,3 (1)/88,8 (2)/88,9 (3)	
			Max.		18,3 (1)/18,6 (2)/18,7 (3)	25 (1)/25,3 (2)/25,4 (3)	29,3 (1)/29,6 (2)/29,6 (3)	38,6 (1)/38,9 (2)/39,1 (3)	45,2 (1)/45,6 (2)/45,7 (3)	49,6 (1)/50 (2)/50,1 (3)	58,2 (1)/58,6 (2)/58,7 (3)	72,7 (1)/73,3 (2)/73,4 (3)	98,3 (1)/98,8 (2)/98,9 (3)
Power input	Cooling	Nom.	kW	5,5 (1)/5,45 (2)/5,6 (3)	6,6 (1)/6,56 (2)/6,7 (3)	8,5 (1)/8,48 (2)/8,7 (3)	10,3 (1)/10,3 (2)/10,4 (3)	13,4 (1)/13,3 (2)/13,5 (3)	13,2 (1)/13,2 (2)/13,3 (3)	17 (1)/16,9 (2)/17 (3)	21,8 (1)/21,9 (2)/22 (3)	31 (1)/31,1 (2)/31,2 (3)	
Capacity control	Method	Inverter controlled											
	Minimum capacity	%		18	14	12	19	15	14	12	15	14	
EER				2,90 (1)/2,96 (2)/2,89 (3)	3,16 (1)/3,22 (2)/3,15 (3)	3,00 (1)/3,05 (2)/2,98 (3)	3,13 (1)/3,18 (2)/3,14 (3)	2,95 (1)/3,00 (2)/2,97 (3)	3,12 (1)/3,17 (2)/3,15 (3)	2,98 (1)/3,03 (2)/3,02 (3)	2,93 (1)/2,95 (2)/2,93 (3)	2,84 (1)/2,85 (2)/2,85 (3)	
SEER				5,00 (1)/5,30 (2)/5,20 (3)	5,00 (1)/5,41 (2)/5,32 (3)	5,06 (1)/5,41 (2)/5,34 (3)	5,21 (1)/5,70 (2)/5,67 (3)	5,09 (1)/5,36 (2)/5,34 (3)	5,41 (1)/5,76 (2)/5,76 (3)	5,33 (1)/5,48 (2)/5,40 (3)	5,21 (1)/5,34 (2)/5,27 (3)	5,03 (1)/5,18 (2)/5,12 (3)	
η _{s,c}		%		197 (1)/209 (2)/205 (3)	197 (1)/213 (2)/210 (3)	200 (1)/213 (2)/211 (3)	205 (1)/225 (2)/224 (3)	201 (1)/211 (2)/210 (3)	213 (1)/228 (2)/227 (3)	210 (1)/216 (2)/213 (3)	205 (1)/211 (2)/208 (3)	198 (1)/204 (2)/202 (3)	
Dimensions	Unit	Height	mm	1.878									
		Width	mm	1.552			1.752		2.306		2.906		3.506
		Depth	mm	802							814		
Weight	Unit	kg	222 (1)/256 (2) (3)	245 (1)/278 (2) (3)		340 (1)/383 (2) (3)	339 (1)/382 (2) (3)		480 (1)/531 (2) (3)		574 (1)/630 (2) (3)	672 (1)/727 (2) (3)	
Sound power level	Cooling	Nom.	dB(A)	76		78	79	80		81	83	85	
Refrigerant	Circuits	Quantity		1							2		
Power supply	Phase/Frequency/Voltage	Hz/V					3N~/50/400						

Options

Code	EWAT-CZN/CZP/CZH	016	021	025	032	40- MONO	40- DUAL	050	064	090
191	Antifreeze protection electric heater ⁽⁴⁾	€ 722,-	722,-	722,-	722,-	722,-	722,-	722,-	722,-	722,-
192	High ambient temperature kit ⁽⁵⁾	€ 236,-	236,-	236,-	236,-	236,-	236,-	236,-	236,-	236,-
218	Partial heat recovery ⁽⁶⁾	€ 910,-	914,-	914,-	1.027,-	1.027,-	1.494,-	1.494,-	1.635,-	1.748,-

Accessories

Code	EWAT-CZN/CZP/CZH	016	021	025	032	40- MONO	40- DUAL	050	064	090
EKRSC TMS	Temperature sensor for master/slave configuration	€ 95,-	95,-	95,-	95,-	95,-	95,-	95,-	95,-	95,-
EKRSC SM	Daikin on Site kit modem + antenna	€ 329,-	329,-	329,-	329,-	329,-	329,-	329,-	329,-	329,-
EKRSC BMS	BMS and connectivity kit (Modbus TCP-IP, Bacnet TCP-IP and MSTP/IP)	€ 410,-	410,-	410,-	410,-	410,-	410,-	410,-	410,-	410,-
EKRSC IO	I/O extension module for VPF, setpoint reset, current limit, demand limit and DHW	€ 298,-	298,-	298,-	298,-	298,-	298,-	298,-	298,-	298,-
EKRSC DP	Differential Pressure Transducer 0-5 bar for VPF applications ⁽⁷⁾	€ 1.987,-	1.987,-	1.987,-	1.987,-	1.987,-	1.987,-	1.987,-	1.987,-	1.987,-

(1) EWAT-CZN: version without pump. (2) EWAT-CZP: version with pump low lift. (3) EWAT-CZH: version with pump high lift.

All the cooling performances (cooling capacity, unit power input in cooling and EER) are based on the following conditions: 12.0/7.0°C; ambient 35.0°C, unit at full load operation; operating fluid: water; fouling factor = 0. EN14511:2018. SEER is calculated in accordance with the regulation No. 2281/2016 and standard EN14825 for information only, unless the unit is a "cooling-only" type. Performances according to CSS software 10.29

(4) Selecting option 191, material name changes as follow: EWA(Y)T-CZ / N - P- H / B / 1 - 2

(5) Selecting option 192, material name changes as follow: EWA(Y)T-CZ / N - P- H / A / 1 - 2

(6) Partial heat recovery option is including the option 191. Selecting option 218, material name changes as follow: EWA(Y)T-CZ / N - P- H / C / 1 - 2

(7) In case of Variable Primary Flow Control (VPF) two pieces are needed to be ordered

EWYT-CZ

- › Inverter controlled scroll compressor with refrigerant R-32
- › High efficiency with leader-of-class SEER and SCOP
- › Application range **cooling** air side -20°C to +52°C
- › Application range **cooling** water side -15°C to +25°C
- › Application range **heating** air side -20°C to +35°C
- › Application range **heating** water side +20°C to +60°C
- › Available with inverter pump kit both low and high lift
- › Optional advanced connectivity kit including: connectivity to any BMS, Daikin on Site and the Daikin App for fast commissioning



Unit size			EWYT-CZN/CZP/CZH	016	021	025	032	40 - MONO	40 - DUAL	050	064	090		
EWYT-CZN (without pump) ⁽¹⁾			€	11.055,-	12.928,-	14.676,-	17.152,-	20.491,-	22.553,-	24.718,-	28.892,-	36.633,-		
EWYT-CZP (with low lift pump) ⁽²⁾			€	12.136,-	14.399,-	16.167,-	18.991,-	22.752,-	24.618,-	27.122,-	31.428,-	41.543,-		
EWYT-CZH (with high lift pump) ⁽³⁾			€	12.728,-	14.840,-	16.562,-	19.313,-	23.637,-	25.305,-	27.763,-	32.018,-	42.141,-		
Cooling capacity	Nom.	kW	kW	15,9 (1)/16,1 (2)/16,2 (3)	20,9 (1)/21,1 (2)/21,2 (3)	25,6 (1)/25,9 (2)/25,9 (3)	32,4 (1)/32,7 (2)/32,8 (3)	39,6 (1)/39,9 (2)/40,1 (3)	41,4 (1)/41,7 (2)/41,8 (3)	50,8 (1)/51,1 (2)/51,3 (3)	64 (1)/64,4 (2)/64,5 (3)	88,3 (1)/88,8 (2)/88,9 (3)		
				Max.	18,3 (1)/18,6 (2)/18,7 (3)	25 (1)/25,3 (2)/25,4 (3)	29,3 (1)/29,6 (2)/29,6 (3)	38,6 (1)/38,9 (2)/39,1 (3)	45,2 (1)/45,6 (2)/45,7 (3)	49,6 (1)/50 (2)/50,1 (3)	58,2 (1)/58,6 (2)/58,7 (3)	72,7 (1)/73,3 (2)/73,4 (3)	98,3 (1)/98,8 (2)/98,9 (3)	
Heating capacity	Nom.	kW	kW	15,9 (1)/15,62 (2)/15,5 (3)	20,2 (1)/19,93 (2)/19,8 (3)	24,8 (1)/24,6 (2)/24,5 (3)	32,4 (1)/32,08 (2)/32 (3)	39,4 (1)/39 (2)/38,9 (3)	40,3 (1)/40,01 (2)/39,9 (3)	49,8 (1)/49,49 (2)/49,4 (3)	61,9 (1)/61,43 (2)/61,3 (3)	85,8 (1)/85,33 (2)/85,2 (3)		
				Max.	18,3 (1)/18 (2)/18 (3)	24,3 (1)/24 (2)/23,9 (3)	28,7 (1)/28,4 (2)/28,3 (3)	36,5 (1)/36,2 (2)/36,1 (3)	44,7 (1)/44,3 (2)/44,2 (3)	48,7 (1)/48,4 (2)/48,3 (3)	57,3 (1)/58,9 (2)/56,7 (3)	69,2 (1)/68,7 (2)/68,6 (3)	94,7 (1)/94,1 (2)/94 (3)	
Power input	Cooling	Nom.	kW	5,5 (1)/5,45 (2)/5,6 (3)	6,6 (1)/6,56 (2)/6,7 (3)	8,5 (1)/8,48 (2)/8,7 (3)	10,3 (1)/10,3 (2)/10,4 (3)	13,4 (1)/13,3 (2)/13,5 (3)	13,2 (1)/13,2 (2)/13,3 (3)	17 (1)/16,9 (2)/17 (3)	21,8 (1)/21,9 (2)/22 (3)	31 (1)/31,1 (2)/31,2 (3)		
				Heating	Nom.	4,7 (1)/4,63 (2)/4,8 (3)	5,8 (1)/5,81 (2)/6 (3)	7,5 (1)/7,42 (2)/7,6 (3)	9,4 (1)/9,32 (2)/9,5 (3)	11,8 (1)/11,7 (2)/11,9 (3)	11,9 (1)/11,8 (2)/12 (3)	15,4 (1)/15,3 (2)/15,4 (3)	19,1 (1)/19,2 (2)/19,3 (3)	27,2 (1)/27,3 (2)/27,4 (3)
Capacity control	Method	Inverter controlled												
	Minimum capacity	%	18	14	12	19	15	14	12	15	14			
EER			2,9 (1)/2,96 (2)/2,89 (3)	3,16 (1)/3,22 (2)/3,15 (3)	3 (1)/3,05 (2)/2,98 (3)	3,13 (1)/3,18 (2)/3,14 (3)	2,95 (1)/3 (2)/2,97 (3)	3,12 (1)/3,17 (2)/3,15 (3)	2,98 (1)/3,03 (2)/3,02 (3)	2,93 (1)/2,95 (2)/2,93 (3)	2,84 (1)/2,85 (2)/2,85 (3)			
COP			3,41 (1)/3,37 (2)/3,24 (3)	3,46 (1)/3,43 (2)/3,31 (3)	3,33 (1)/3,31 (2)/3,22 (3)	3,45 (1)/3,44 (2)/3,37 (3)	3,33 (1)/3,33 (2)/3,28 (3)	3,38 (1)/3,38 (2)/3,33 (3)	3,24 (1)/3,23 (2)/3,2 (3)	3,23 (1)/3,2 (2)/3,17 (3)	3,16 (1)/3,13 (2)/3,12 (3)			
SEER			5 (1)/5,3 (2)/5,2 (3)	5 (1)/5,41 (2)/5,32 (3)	5,06 (1)/5,41 (2)/5,34 (3)	5,21 (1)/5,7 (2)/5,67 (3)	5,09 (1)/5,36 (2)/5,34 (3)	5,41 (1)/5,76 (2)/5,76 (3)	5,33 (1)/5,48 (2)/5,4 (3)	5,21 (1)/5,34 (2)/5,27 (3)	5,03 (1)/5,18 (2)/5,12 (3)			
η _{sc}		%	197 (1)/209 (2)/205 (3)	197 (1)/213 (2)/210 (3)	200 (1)/213 (2)/211 (3)	205 (1)/225 (2)/224 (3)	201 (1)/211 (2)/210 (3)	213 (1)/228 (2)/227 (3)	210 (1)/216 (2)/213 (3)	205 (1)/211 (2)/208 (3)	198 (1)/204 (2)/202 (3)			
Space heating	Average climate water outlet 35°C	General η _s (Seasonal space heating efficiency)	%	153 (1)/158 (2)/152 (3)	157 (1)/165 (2)/159 (3)	160 (1)/165 (2)/160 (3)	159 (1)/164 (2)/161 (3)	160 (1)/164 (2)/162 (3)	158 (1)/165 (2)/163 (3)	157 (1)/162 (2)/161 (3)	156 (1)/157 (2)/155 (3)	157 (1)/159 (2)/157 (3)		
				SCOP Low Temp.	3,89 (1)/4,03 (2)/3,88 (3)	4 (1)/4,19 (2)/4,06 (3)	4,07 (1)/4,19 (2)/4,08 (3)	4,06 (1)/4,18 (2)/4,11 (3)	4,07 (1)/4,18 (2)/4,13 (3)	4,02 (1)/4,19 (2)/4,14 (3)	4 (1)/4,12 (2)/4,09 (3)	3,98 (1)/4,01 (2)/3,94 (3)	4 (1)/4,04 (2)/4 (3)	
				Seasonal space heating eff. Class	A++	A++	A++	A++	A++	A++	A++	A++	A++	
Dimensions	Unit	Height	mm	1.878										
		Width	mm	1.552			1.752			2.306		2.906		3.506
		Depth	mm	802						814				
Weight	Unit	kg	227 (1)/261 (2) (3)	252 (1)/286 (2) (3)		350 (1)/393 (2) (3)		349 (1)/392 (2) (3)		494 (1)/546 (2) (3)		588 (1)/644 (2) (3)	693 (1)/749 (2) (3)	
Sound power level	Cooling	Nom.	dB(A)	76		78		79		80		81	83	85
Refrigerant	Circuits	Quantity		1						2				
Power supply	Phase/Frequency/Voltage	Hz/V		3N~/50/400										

Options

Code	EWYT-CZN/CZP/CZH	016	021	025	032	40 - MONO	40 - DUAL	050	064	090
191	Antifreeze protection electric heater ⁽⁴⁾	€ 723,-	723,-	723,-	723,-	723,-	723,-	723,-	723,-	723,-
192	High ambient temperature kit ⁽⁵⁾	€ 237,-	237,-	237,-	237,-	237,-	237,-	237,-	237,-	237,-
218	Partial heat recovery ⁽⁶⁾	€ 910,-	914,-	914,-	1.027,-	1.027,-	1.494,-	1.494,-	1.635,-	1.748,-

Accessories

Code	EWYT-CZN/CZP/CZH	016	021	025	032	40 - MONO	40 - DUAL	050	064	090
EKRSC TMS	Temperature sensor for master/slave configuration	€ 95,-	95,-	95,-	95,-	95,-	95,-	95,-	95,-	95,-
EKRSC SM	Daikin on Site kit modem + antenna	€ 329,-	329,-	329,-	329,-	329,-	329,-	329,-	329,-	329,-
EKRSC BMS	BMS and connectivity kit (Modbus TCP-IP, Bacnet TCP-IP and MSTP/IP)	€ 410,-	410,-	410,-	410,-	410,-	410,-	410,-	410,-	410,-
EKRSC IO	I/O extension module for VPF, setpoint reset, current limit, demand limit and DHW	€ 298,-	298,-	298,-	298,-	298,-	298,-	298,-	298,-	298,-
EKRSC DP	Differential Pressure Transducer 0-5 bar for VPF applications ⁽⁷⁾	€ 1.987,-	1.987,-	1.987,-	1.987,-	1.987,-	1.987,-	1.987,-	1.987,-	1.987,-

(1) EWYT-CZN: version without pump. (2) EWYT-CZP: version with pump low lift. (3) EWYT-CZH: version with pump high lift. All the cooling performances (cooling capacity, unit power input in cooling and EER) are based on the following conditions: 12.0/7.0°C; ambient 35.0°C, unit at full load operation; operating fluid: water; fouling factor = 0. EN14511:2018. All the heating performances (heating capacity, unit power input in heating and COP) are based on the following conditions: 40.0/45.0°C; ambient 7.0°C, unit at full load operation; operating fluid: water; fouling factor = 0. EN14511:2018. SEER is calculated in accordance with the regulation No. 2281/2016 and standard EN14825 for information only, unless the unit is a "cooling-only" type. The values of Low Temperature SCOP and η_s are calculated in accordance with the Ecodesign regulation No. 813/2013 and the standard EN 14825-2018.

Performances according to CSS software 10.29

(4) Selecting option 191, material name changes as follow: EWA(Y)T-CZ / N - P- H / B / 1 - 2

(5) Selecting option 192, material name changes as follow: EWA(Y)T-CZ / N - P- H / A / 1 - 2

(6) Partial heat recovery option is including the option 191. Selecting option 218, material name changes as follow: EWA(Y)T-CZ / N - P- H / C / 1 - 2

(7) In case of Variable Primary Flow Control (VPF) two pieces are needed to be ordered

EWA/YT-CZ

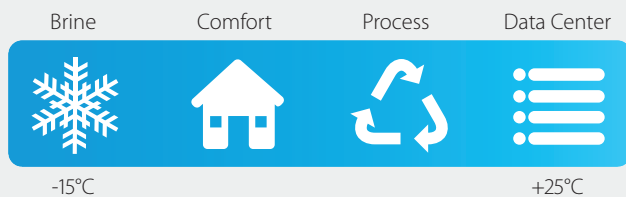


EWAT-CZ Air Cooled chiller & EWYT-CZ Heat Pump at a glance

- › Top class efficiency: SEER up to 5,76, SEPR up to 8,48 and SCOP(AW35) up to 4,197
- › Cooling Only and Heat Pump availability
- › Extended capacity range: 16 – 90 kW
- › Environmentally friendly series with R-32 refrigerant: low GWP and low direct and indirect CO₂ emissions levels
- › Inverter scroll compressors for hot water production up to 60 °C
- › New series extremely flexible with a wide range of applications from process cooling, to residential, commercial and data centers applications
- › Condenser fan silent mode option
- › Inverter pump kit option with both low and high lift available
- › One or two independent refrigerant circuits with one or two inverter scroll compressors
- › Full compatibility with Daikin on Site
- › Master/Slave option available as standard, allowing to connect up to 4 units working as single system
- › High temperature kit as option for operation up to + 52 °C Outside temperature

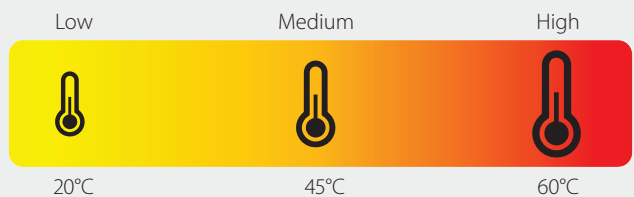
Operating limits - cooling only

Chilled Water

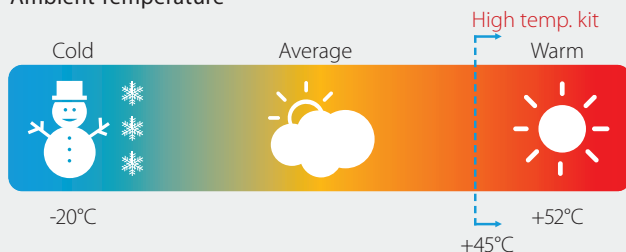


Operating limits - heat pump

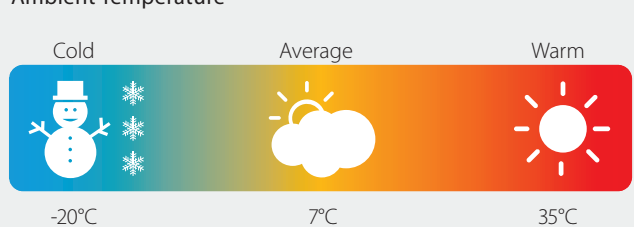
Hot Water



Ambient Temperature



Ambient Temperature

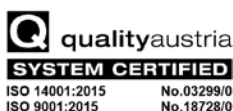




DAIKIN AIRCONDITIONING CENTRAL EUROPE HandelsgbH

Lemböckgasse 59/1/1, 1230 Vienna, Austria · Tel.: + 43 (0) 1 253 21 11 · e-mail: office@daikin.bg · www.daikin.bg

Daikin products are distributed by:



Daikin Europe N.V. participates in the Eurovent Certified Performance programme for Fan Coil Units and Variable Refrigerant Flow systems. Daikin Applied Europe S.P.A. participates in the Eurovent Certified Performance programme for Liquid Chilling Packages, Hydronic Heat Pumps and Air Handling Units. Check ongoing validity of certificate: www.eurovent-certification.com

The present publication is drawn up by way of information only and does not constitute an offer binding upon Daikin Europe N.V. / Daikin Central Europe HandelsGmbH, Daikin Europe N.V. / Daikin Central Europe HandelsGmbH have compiled the content of this publication to the best of their knowledge. No express or implied warranty is given for the completeness, accuracy, reliability or fitness for particular purpose of its content and the products and services presented therein. Specifications are subject to change without prior notice. Daikin Europe N.V. / Daikin Central Europe HandelsGmbH explicitly rejects any liability for any direct or indirect damage, in the broadest sense, arising from or related to the use and/or interpretation of this publication. All content is copyrighted by Daikin Europe N.V.

Daikin Inverter Chillers & Heat Pumps brochure 2021-2022 | Version September 2021
We reserve the right for printing errors and model changes