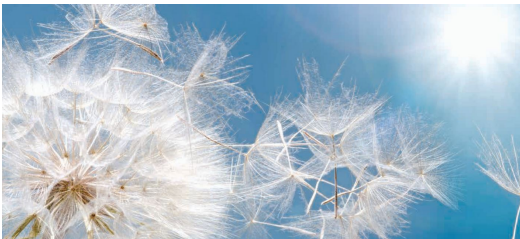


## SPG

## Monosplit

Cooling capacity 2,5 ÷ 6,2 kW  
Heating capacity 2,8 ÷ 6,5 kW

- New R32 ecological refrigerant gas.
- Wi-fi control using the relative accessory.
- Modern design to blend with all furnishing styles.
- Special coil with fin blue coating.
- Indoor units compatible with multisplit systems.



### DESCRIPTION

The monosplit air conditioners of the SPG range are combined with SP-G\_W (Wall) indoor units for wall installation. Universal indoor units: some indoor units can be combined with both multisplit outdoor units of the series MPG and monosplit outdoor units of the series SPG:

SPG	SPG250W	SPG350W	SPG500W	SPG700W
Universal indoor units compatible with MPG multisplit system	•	•	•	•

The outdoor unit features a compressor with DC inverter technology and electric heater to ensure proper winter operation and prevent ice formation on the coil.

### FEATURES



#### Indoor unit

- Wall indoor unit designed to be installed on indoor walls.
- Every indoor unit comes with a remote control and a remote control holder.
  - Fan with DC inverter technology.
  - Regenerable air filter easy to remove and clean.
  - Timer for programming switch-off and switch-on.
  - Auxiliary emergency command integrated into the unit.

- Indoor unit front panel with LED display and indicator lights.
- 3-speed fan, to meet every possible need.
- **Auto** function for a continuous speed variation.
- **Turbo** function to attain the desired temperature as quickly as possible.
- Fitted with a electrical anti-freeze heater (in unit base) to avoid the formation of ice and encourage the drainage of condensate during heating operation.
- Compressor and fan with DC inverter technology.
- **Sleep** night time function well-being program.
- **X-fan** prolonged ventilation function, in order to perfectly dry the coil and avoid the formation and proliferation of pathogens.
- **Anti-freeze** function that allows you to keep an inside minimum temperature of 8 °C in winter.
- **iFeel** function for activating the ambient temperature probe inside the remote control, for improved comfort.

#### X-fan function

This self-cleaning system foresees that the fan of the indoor unit continues its operation for a few minutes after the unit is turned off, in order to perfectly dry the coil and avoid the formation and proliferation of pathogens.





### Outdoor unit

Monosplit air conditioner.  
Reversible air/air heat pump with DC inverter technology.

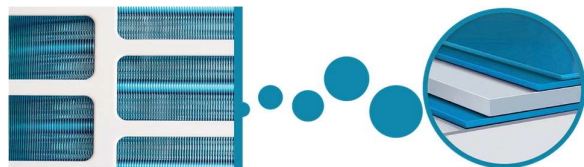
### Smart APP Ewpe

Using the specific accessory, the system offers wi-fi control thanks to the app for iOS and Android devices (available free on Apple Store and Google Play). The system can be controlled from a distance directly on your smartphone or tablet, or via Cloud with the aid of a wireless router connected to the Internet.



### Special blue fin coil

Unlike normal batteries, this special blue epoxy coating is able to protect the heat exchanger against rust and corrosion, in areas where the air has a high salt content.



### General features

- New R32 ecological refrigerant gas with low GWP.
- Operating mode: cooling, heating, dehumidification, automatic and fan only.
- Particularly quiet operation.
- Microprocessor control.
- Auto-restart function.
- Self-diagnosis function.
- Air filter easily removed and cleaned.
- Easy installation and maintenance.

### ACCESSORIES

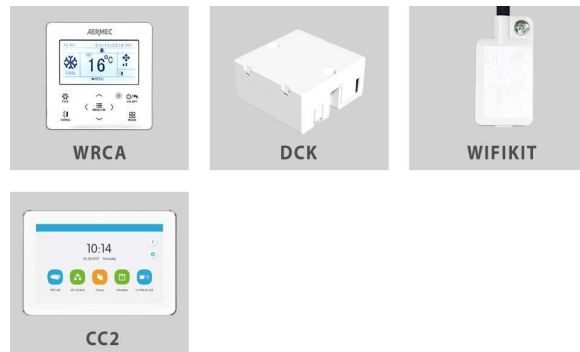
**CC2:** Centralised control with 7" touchscreen display for managing several indoor units within a number of multisplit systems. The centralised control has an integrated external contact. For more information, refer to the specific documentation. \*

**WRCA:** Wired panel with liquid crystal display and soft-touch buttons. This accessory can be used to control not only the traditional system functions but also a weekly timer with a maximum of 8 daily time bands.

\* **The CC2 centralised control can manage up to 36 SPG system.**

**DCK:** Remote Contact Kit. This accessory allows you to switch the system on and off using an external contact.

**WIFIKIT:** Plug & Play module to be installed in the indoor unit for Wi-Fi control.



### ACCESSORIES COMPATIBILITY

Accessory	SPG500W	SPG700W
CC2 (1)	.	.
WRCA (1)	.	.

(1) Auto-restart function.

Accessory	SPG250W	SPG350W	SPG500W	SPG700W
DCK	.	.	.	.
WIFIKIT	.	.	.	.



Monosplit



<b>Цена на комплект с включен ДДС</b> (вътрешно тяло, външно тяло, дистанционно управление)	euro	578,00	600,00	964,00	1.236,00
	лв.	1.130,46	1.173,49	1.885,42	2.417,40

**PERFORMANCE SPECIFICATIONS**

		(9)	(12)	(18)	(24)
Indoor unit		SPG250W	SPG350W	SPG500W	SPG700W
Outdoor unit		SPG250	SPG350	SPG500	SPG700
<b>Nominal cooling performances</b>					
Cooling capacity (1)	kW	2,50	3,20	4,60	6,20
Cooling input power (1)	kW	0,72	0,99	1,36	1,77
EER (2)	W/W	3,47	3,23	3,39	3,50
Moisture removed	l/h	0,6	1,4	1,8	1,8
<b>Minimum cooling performances</b>					
Cooling capacity	kW	0,50	0,90	1,00	1,60
Cooling input power	kW	0,15	0,22	0,42	0,45
<b>Maximum cooling performances</b>					
Cooling capacity	kW	3,25	3,60	5,30	6,90
Cooling input power	kW	1,30	1,30	1,80	2,20
Cooling input current	A	3,2	4,4	5,9	7,9
<b>Seasonal efficiency</b>					
Annual power consumption	kWh/annum	135	184	251	319
SEER	W/W	6,50	6,10	6,40	6,80
Efficiency energy class (3)		A++	A++	A++	A++
<b>Nominal heating performances</b>					
Heating capacity (4)	kW	2,80	3,40	5,20	6,50
Heating input power (4)	kW	0,75	0,91	1,34	1,65
COP (2)	W/W	3,73	3,71	3,88	3,95
<b>Minimum heating performances</b>					
Heating capacity	kW	0,50	0,90	1,00	1,30
Heating input power	kW	0,14	0,22	0,42	0,45
<b>Maximum heating performances</b>					
Heating capacity	kW	3,50	4,00	5,65	7,91
Heating input power	kW	1,50	1,50	1,90	2,20
Heating input current	A	3,2	4,0	5,8	7,3
<b>Seasonal efficiency (temperate climate)</b>					
Annual power consumption	kWh/annum	875	945	1295	1645
Efficiency energy class (3)		A+	A+	A+	A+
SCOP		4,00	4,00	4,00	4,00

(1) Cooling (EN 14511 and EN 14825) ambient air temperature 27 °C d.b. / 19 °C w.b.; outside air temperature 35 °C; turbo speed; length of refrigerant lines 5 m.

(2) EER/COP in accordance with the Standard (EN 14511), only declared for the purposes of the tax deductions in force at the time of this publication.

(3) Data in accordance with Delegated Regulation (EU) No. 626/2011.

(4) Heating (EN 14511 and EN 14825) ambient air temperature 20 °C d.b.; outside air temperature 7 °C d.b. / 6 °C w.b.; turbo speed; length of refrigerant lines 5 m.

**GENERAL DATA**

Indoor unit		SPG250W	SPG350W	SPG500W	SPG700W
Outdoor unit		SPG250	SPG350	SPG500	SPG700
<b>Electric data</b>					
Rated power input (1)	kW	1,5	1,5	1,9	2,2
Rated current input (1)	A	7,5	7,5	9,0	10,0
<b>Refrigeration pipework</b>					
Diameter of liquid refrigerant connections	mm (inch)	6,35 (1/4")	6,35 (1/4")	6,35 (1/4")	6,35 (1/4")
Diameter of refrigerant gas connections	mm (inch)	9,52 (3/8")	9,52 (3/8")	9,52 (3/8")	12,7 (1/2")
Refrigerant to be added	g/m	16	16	16	16
Maximum refrigerant tube length	m	15	15	25	25
Maximum refrigerant line level difference	m	10,0	10,0	10,0	10,0
<b>Power supply</b>					
Power supply		220-240V - 50Hz	220-240V - 50Hz	220-240V - 50Hz	220-240V - 50Hz

(1) The rated power input (rated current input) is the maximum input electrical power (maximum current input) from the system, in accordance with the Standards EN 60335-1 and EN 60335-2-40.

\* Цената на комплект не включва монтаж.

### INDOOR UNIT DATA

		SPG250W	SPG350W	SPG500W	SPG700W
<b>Indoor unit</b>					
Type of fan	Type	Inverter centrifugal			
<b>Air flow rate</b>					
Turbo	m <sup>3</sup> /h	500	590	850	1100
Maximum	m <sup>3</sup> /h	470	520	800	950
Average	m <sup>3</sup> /h	390	400	700	750
Minimum	m <sup>3</sup> /h	270	320	600	650
<b>Sound power</b>					
Turbo	dB(A)	55,0	56,0	54,0	61,0
Maximum	dB(A)	48,0	49,0	52,0	58,0
Average	dB(A)	44,0	45,0	48,0	52,0
Minimum	dB(A)	34,0	38,0	44,0	49,0
<b>Sound pressure (1 m) (1)</b>					
Turbo	dB(A)	38,0	41,0	44,0	47,0
Maximum	dB(A)	36,0	37,0	42,0	44,0
Average	dB(A)	32,0	33,0	38,0	38,0
Minimum	dB(A)	22,0	26,0	34,0	35,0
<b>Indoor unit</b>					
Condensate discharge diameter	mm	16,0	16,0	16,0	16,0
<b>Power supply</b>					
Indoor unit power supply		220-240V - 50Hz			

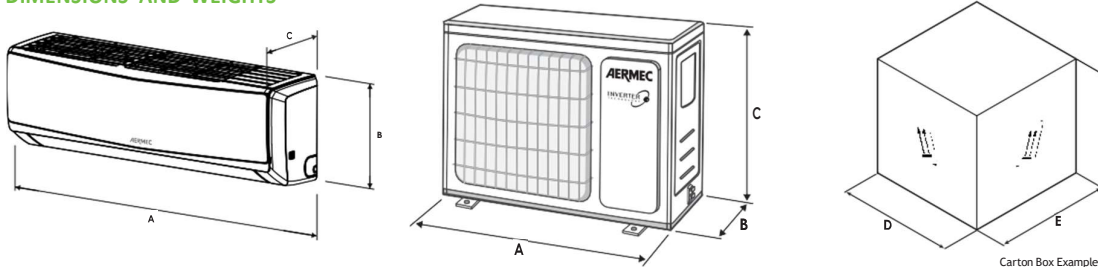
(1) Sound pressure measured in semi anechoic chamber at a distance of 1 m from the source.

### OUTDOOR UNIT DATA

		SPG250	SPG350	SPG500	SPG700
<b>Outdoor unit</b>					
Type of fan	Type	Inverter axial			
<b>Air flow rate</b>					
Maximum	m <sup>3</sup> /h	1950	1950	1950	2800
<b>Sound power</b>					
Maximum	dB(A)	62,0	64,0	63,0	67,0
<b>Sound pressure (1 m) (1)</b>					
Maximum	dB(A)	51,0	51,0	55,0	58,0
<b>Compressor</b>					
Type	type	Inverter rotary			
Refrigerant	type	R32			
Refrigerant charge	kg	0,50	0,55	0,75	1,30
Potential global heating	GWP	675kgCO <sub>2</sub> eq			
Equivalent CO <sub>2</sub>	t	0,34	0,37	0,51	0,88
<b>Outdoor unit</b>					
Condensate discharge diameter	mm	16,0	16,0	16,0	16,0

(1) Sound pressure measured in semi anechoic chamber at a distance of 1 m from the source.

### DIMENSIONS AND WEIGHTS



		SPG250W	SPG350W	SPG500W	SPG700W
<b>Indoor unit</b>					
A	mm	696	770	972	1081
B	mm	251	251	300	325
C	mm	190	190	225	248
D	mm	747	822	1022	1137
E	mm	324	324	374	407
F	mm	262	262	299	334
Net weight	kg	7,50	8,50	13,50	16,50
Weight for transport	kg	9,00	10,00	16,00	19,50
<b>Outdoor unit</b>					
A	mm	732	732	732	873
B	mm	330	330	330	376
C	mm	550	550	555	555
D	mm	792	792	794	951
E	mm	393	393	376	431
F	mm	615	615	615	620
Net weight	kg	25,00	25,00	27,00	37,00
Weight for transport	kg	28,00	28,00	29,00	40,00